



# The Highland Heartbeat

Highland, a Place to be Seen, Known, and Loved

**Sunday, December 28, 2025**

*The Highland Church office will be closed to the public from December 25 through January 2. Staff members who are not on vacation will be available to respond to emergencies during this time. We kindly ask that routine business be limited so staff may focus on essential year-end responsibilities. The office will re-open for regular business on Friday, January 2, 2026. Thank you for your understanding and cooperation.*

## Exploring a 2026 Trip to El Salvador

On **Sunday, December 14**, a group gathered after worship for an interest meeting about a potential 2026 trip to our mission partner, Juan Calvino, in San Salvador, El Salvador. The conversation was encouraging, and we are excited to continue exploring this opportunity together. We are tentatively targeting early June 2026, but dates are still open for the summer or even the fall. We are planning an eight-day trip, which will include a Sunday, allowing us to worship with the local church.

The trip will be open to participants from high school age through adulthood and will emphasize learning, listening, and strengthening relationships.

If you are interested in this trip and would like to be included in our planning, please contact **Pastor Matt** by **Sunday, January 18**, so we can continue discerning next steps together. More details will be shared as plans take shape.

## Visit the Library!

It is always a time for reflection and blessings — especially in the New Year! Please browse the round table in the library for books, both fiction and non, that will speak to your heart.



## Adult Sunday School

Start 2026 with a deeper dive into Scripture and good conversation! Beginning **January 4**, you're invited to gather after worship from **11:30 to 12:30** in **Room 204** for a new Adult Sunday School series. This study is designed with flexibility in mind: come when you can, jump in at any point, and bring your questions. From January through Easter, we'll journey through the Gospel of Matthew, exploring its sweeping narrative and paying special attention to one of its central themes: the Kingdom of Heaven. Whether you're looking to learn something new, reconnect with Scripture, or simply enjoy thoughtful discussion with others, there's a place for you. We hope you'll join us!



## From Your Stewardship Committee: Thank You and a Reminder

Highland's congregation has responded generously to this fall's stewardship campaign. As of December 8, about **248** individuals and families have pledged just over **\$975,000** in financial support for 2026. This will go far in helping us meet what is expected to be a 2026 budget of around \$1.4 million, and we are grateful for the response so far.

At the same time, some **66** individuals and families who submitted a pledge for 2025 have not yet done so for 2026. To get us further toward greater support of next year's budget, we need to hear from those who have not yet pledged. Pledge cards can be obtained by calling the church office. It is not too late to pledge, and no amount is too small.

## Exploring “The Bias Inside Us” A Presbytery Learning Opportunity

Highland is committed to learning, reflecting, and growing on our journey of discipleship. To that end, members of Highland are invited to join others from the Presbytery of Donegal for a special visit to *The Bias Inside Us*, a traveling Smithsonian exhibition, on **Thursday, January 8, at 10:00 AM**.

Hosted by the Chester County History Center, the exhibition explores the science and history of human bias. The Smithsonian project is designed not to shame or divide, but to help communities deepen understanding, strengthen empathy, and foster healthy dialogue. Whether you are curious about how the brain makes quick decisions, interested in how communities can communicate across differences, or simply eager to learn from a trusted national institution, this is a thoughtful and engaging opportunity.

This event is open to anyone who wants to learn more about how we as individuals and communities can cultivate fairness, wisdom, and compassion. These are values deeply rooted in Scripture’s call to love our neighbors.

Participants will gather at 10:00 AM inside the museum’s front entrance for introductions and a brief orientation before exploring the exhibit together. The Presbytery will cover the cost of the exhibit and lunch, and Presbytery members will guide a conversation after lunch.

*We hope you’ll join this meaningful time of learning and reflection.*



## Reverse Advent Calendar: Thank You!

We are grateful for the food contributions made during December — your generosity helped provide nourishment and support to many individuals and families in Lancaster County through support of the Lancaster Food Hub!

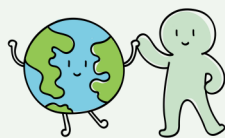
## Women’s Bible Study

Looking to start off the new year digging into God's word? We are offering a Women's Bible Study on the book of Revelation by **Jen Wilkin**, starting on **Thursday, January 8**. We will meet from **7:00 to 8:30 PM** in **Room 208**, and finish the series on March 13. Plan to come and learn! The cost of the workbook is \$25, which includes video access. Contact Barb Droz or the church office if you are interested.

*"Two thousand years ago, John's Revelation was circulated and read aloud among seven churches in Asia Minor. Those who heard the letter understood it and drew encouragement from its message. The same can be true for you today."*

- Jen Wilkin

## Earth Care Partner Events



**SAT  
Jan  
3** **1:00 - 3:00 PM**  
New Year Hike at  
High Family Nature Preserve



**SAT  
Jan  
10** **1:00 - 4:00 PM**  
Give Back to Nature at  
Graham Nature Preserve



**SAT  
Jan  
17** **1:00 - 3:00 PM**  
New Year Hike at Welsh  
Mountain Nature Preserve



## Wednesday Morning Breakfast Group

Interested in good fellowship, good discussions, & a good breakfast too? The Highland men’s breakfast group meets at **Oregon Dairy** on **Wednesday mornings** from **7:30 to 9:00 AM**. Each week, we read a book and discuss a chapter or two. We take turns leading the discussion; some days there’s no leader, just conversation, and we welcome those who’d simply like to listen as well. Book topics vary from theology (we are currently reading Elaine Pagels’ *Miracles and Wonder*), to history (recent biographies of Lincoln and Franklin), to works that challenge our thinking (*The Tipping Point*, *Talking to Strangers*, and books on artificial intelligence). In the new year, we will start a new book to be determined in the coming weeks. Please contact Dick Entz for more details!



## Update from Pastor Matt

### Travel Seminar to India

From December 27 to January 16, Claire and I will be in India as part of an international travel seminar through Union Presbyterian Seminary. This seminar brings together current seminary students and graduates to study theological education and the practice of Christianity in a context very different from our own. A central focus of the trip is visiting seminaries and theological colleges across the country, where we will meet with students, faculty, and church leaders. We will learn how Christianity is taught and lived in a pluralistic society where it is a minority religion alongside Hinduism and Islam. We will explore what faithful witness and discipleship look like in that setting. We will also visit some of India's cultural and historical landmarks.

This experience will strengthen my ministry at Highland by enriching my theological perspective and deepening my understanding of the global church. I am grateful for your prayers and support, and I look forward to sharing more when I return.

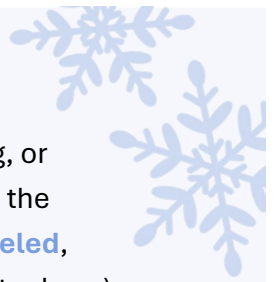
## Winter Weather Closure Policy

Highland Presbyterian Church will continue to monitor **Manheim Township School District** (MTSD), but weather decisions will be made based on *actual* conditions and safety, not strictly school status. If Manheim Township School District issues a delay, or if Highland determines road/parking conditions warrant a delay, Highland will operate on a **2-hour delay**.

### Full Closure

A full closure happens when roads, parking, or walkways are unsafe. During a full closure, the office and all in-person programs are **canceled**, with essential staff allowed on-site (if safe to do so).

**Announcements** will be made via the church website, email, social media, WGAL, and phone message. Outside groups will be notified directly.



## Highland Happenings

### Lancaster Heritage Chorale Concert

December 14 may have been a bleak winter day, but for the more than 260 people who attended the Lancaster Heritage Chorale's *In a Bleak Midwinter* performance (in person and online), it was warmed by a spectacular concert. During the intermission, pianist Jordon Groh wowed the audience with a performance on the Steinway Grand. Following the concert, HPA patrons gathered for light refreshments and conversation while our own Fred Keimle provided a musical interlude on the Fellowship Hall grand piano.

Later, James Fortin, Development Manager for Music For Everyone (MFE), gave a brief presentation highlighting the many programs they offer to encourage and educate young musicians, inspiring them to experience the magic of music. We applaud their mission to mentor and nurture future performers who may one day appear on our stages and chancels. A check from Highland Performing Arts (HPA) was presented to support MFE, extending Highland's mission to be seen, heard, and loved and paying homage to the scholarships that Lancaster Lemonade Concerts has offered in the past to support local music students.



You can view a recording of the concert here: <https://www.youtube.com/live/niwnuR8JlCk>.



# Worship



## This Week’s Scripture

Psalm 46  
“Merciful Snow”  
by Michael L. Lindvall  
Rev. Allison Beaulieu

## Upcoming Preaching Schedule

**January 4**  
Rev. Allison Beaulieu

# Upcoming Events

## Thursday, January 8

**7:00 PM** Ladies Night Out at Harvest

## Wednesday, January 21

**12:00 PM** Working Adult Lunch — Zig's Bakery & Cafe

**6:00 PM** Men’s Trivia Night at Stoner Grille

## Wednesday, February 4

**7:00 PM** Highland Keyboard Extravaganza

## Worship Times

Ignite Worship | 9:30 AM  
Traditional Worship | 10:00 AM

## Program Staff

Senior Pastor — Rev. Allison Beaulieu  
Pastor for Congregational Care — Rev. Dr. Ann Osborne  
Associate Pastor for Missions & Discipleship — Rev. Matt Drumheller  
Parish Associate — Rev. Dr. Bob Burns  
Parish Associate — Rev. Ken Osborne  
Music Director — Dr. Paul Thorlakson  
Ignite Worship Leader — Dr. Jeffrey Martin  
IT/Media Coordinator & Organist — Jonathan Lefever  
Director of Children, Youth, & Family Ministries — Sarah Hostetter



## Office Hours

**Monday - Thursday**  
9:00 AM to 3:00 PM

**Friday**  
9:00 AM to 12:00 PM

## Contact Information

717-569-2651  
[www.HighlandPC.org](http://www.HighlandPC.org)  
500 East Roseville Road  
Lancaster, Pennsylvania 17601

For staff contact information, visit our website at [www.highlandpc.org](http://www.highlandpc.org) and go to **About Us > Staff**, or ask the reception desk for a copy of our Staff & Committee Contacts brochure.

*Highland: A Place to be  
Seen, Known, & Loved*

## Year to Date Finances

As of November 30, 2025  
Expenses exceed revenues by \$90,000

	Actual	Budget	Difference
Revenue	\$1,098,000	\$1,334,000	- \$236,000
Expenses	\$1,188,000	\$1,311,000	- \$123,000